

Central Springfield National Register Historic District Additional Documentation + Boundary Expansion

City of Springfield Historic Sites Commission

February 10, 2015



Central Springfield National Register Historic District

Presentation Overview

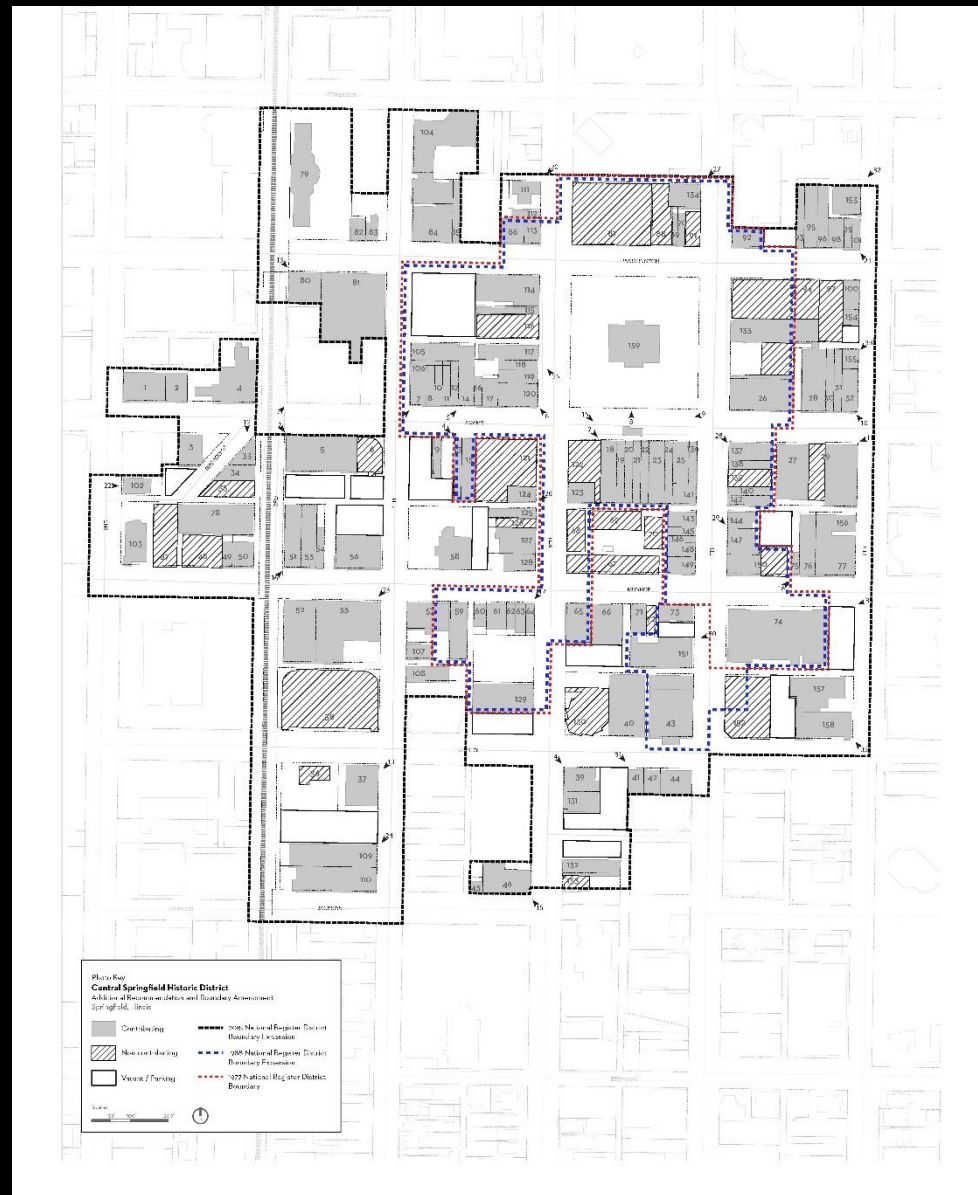
- Overview of the National Register of Historic Places
- Overview of the Central Springfield National Register District Boundary Expansion
- Next steps in the designation process
- Questions + answers



Central Springfield National Register Historic District

Project Purpose

- Document + evaluate commercial + institutional properties since the last National Register boundary extension in 1986



National Register of Historic Places

- The nation's list of buildings, structures and sites worthy of preservation
- Administered by the National Park Service in partnership with State Historic Preservation Offices (SHPOs)
- More than 80,000 properties listed representing 1.4 million individual resources



National Register of Historic Places

- Authorized by the National Historic Preservation Act of 1966
- Properties + districts listed only through a nomination process managed by IHPA + NPS
- Properties must meet one or several National Register Criteria for Evaluation
- National Register *not to be confused* with National Historic Landmarks (NHLs), national historical parks or local districts



National Register of Historic Places

- National Register listing places no restriction on use of property
- Provides a review process for Federal-funded or licensed projects that may impact NR properties, sites or districts (Section 106 of the NHPA)
- Provides a review process for State-funded or licensed projects (Section 707 of the ILHRA)



Historic Preservation Tax Credits

- Income-producing are eligible to receive a 20 percent investment tax credit
- Authorized under U.S. Tax Reform Act of 1977 + 1986
- Administered by the NPS + the IRS in partnership with SHPOs
- Must be a certified historic building, i.e. income-producing contributing property in a NR District or individually listed
- Three-part application process managed by IHPA + NPS



Federal Historic Preservation Tax Credits

- \$3.39 billion of investment in rehabilitation projects completed in 2013, \$69 billion since 1997
- 78 jobs created per project
- 25,000 new housing units created in 2013





Fisher Building-Latham Block

Bucks Building



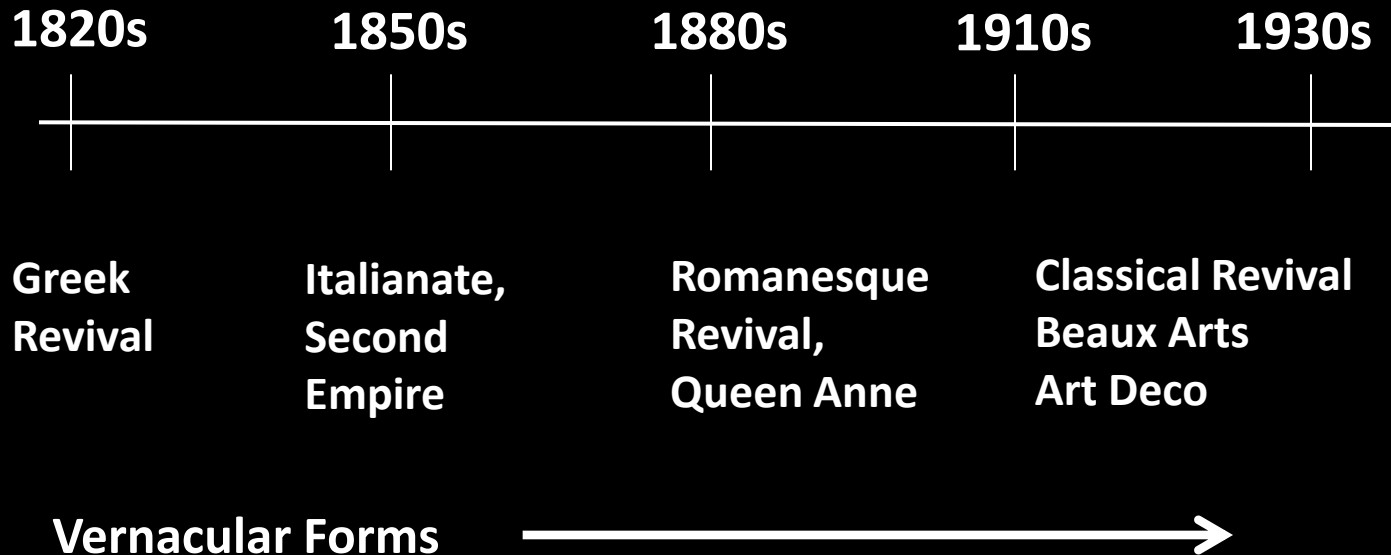
National Register Evaluation Criteria

- Properties must be 50 years or older
- National Register Eligibility Criteria
 - A. Property associated with significant historical trends or events
 - B. Property associated with the lives of significant person(s)
 - C. Property represents distinctive design or construction
 - D. Property has potential to reveal important archeological data
- Boundary expansion eligible under Criterion C



Central Springfield NR District

- First established in 1977 with 55 contributing + 16 non-contributing buildings





Greek Revival

- Old State Capitol (1837)
- Lincoln-Herndon Law Office (1837)



Italianate-Romanesque Revival



400 East Block of East Monroe Street

Romanesque Revival-Art Deco



F. Reisch + Brothers Building, 414 East Adams Street (1880s) +
Schnepf + Barnes Building, 412 East Adams Street (1920s)



BOOTH
&
MCCOSKER



CONGRESSMAN
AARON SCHOCK

233

UPPER SPACE
AVAILABLE
217-528-7078

**HARRIS
LAW CENTER**

231

231



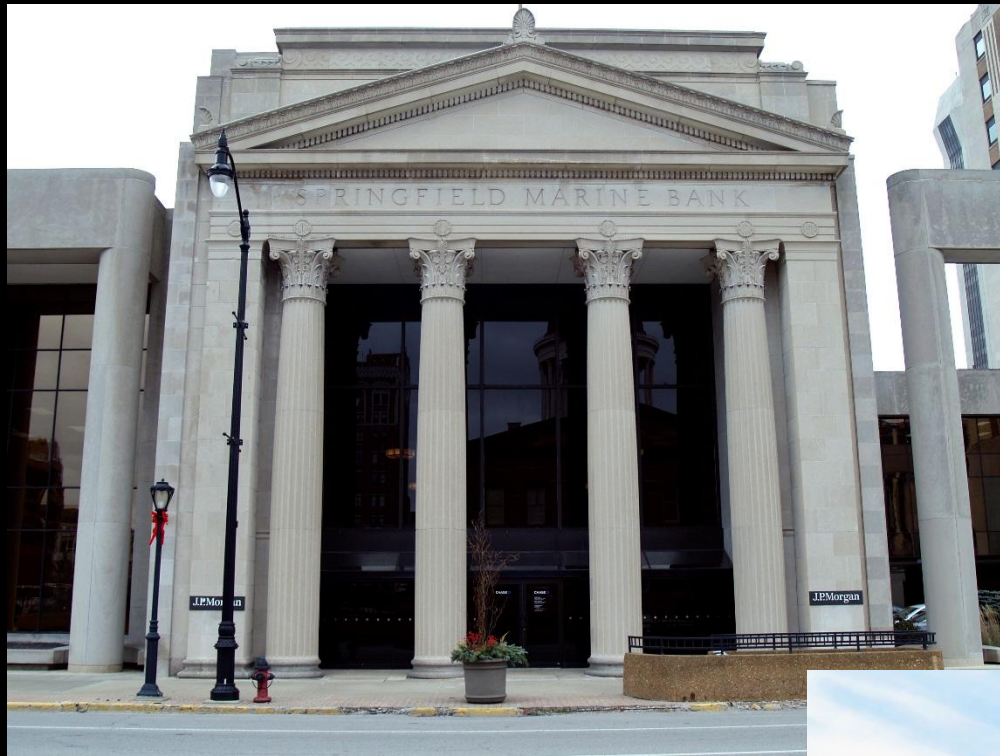
SPENCER
Jewelry and Gifts

Second Empire
Booth + McCosker Building, 229 South 6th Street, 1866



AVAILABLE
SALVAFALL COMMERCIAL
(217) 547-6950
www.salvafall.com
REYNOLDS REALTY
www.reynoldsrealty.com

Fisher Building-Latham Block, Italianate with Classical Revival details
111-115 South 6th Street



Classical Revival

Springfield Marine Bank,
100 South 6th Street
(1927)

U.S. Post Office and
Courthouse, 600 East
Monroe Street (1930)



Revival Styles

Myers Department Store, 101 South 5th Street (1925)



Ridgely State Farmers Bank, 500 East Monroe Street (1926)





Art Deco

Illinois Building,
607 East Adams Street (1925)





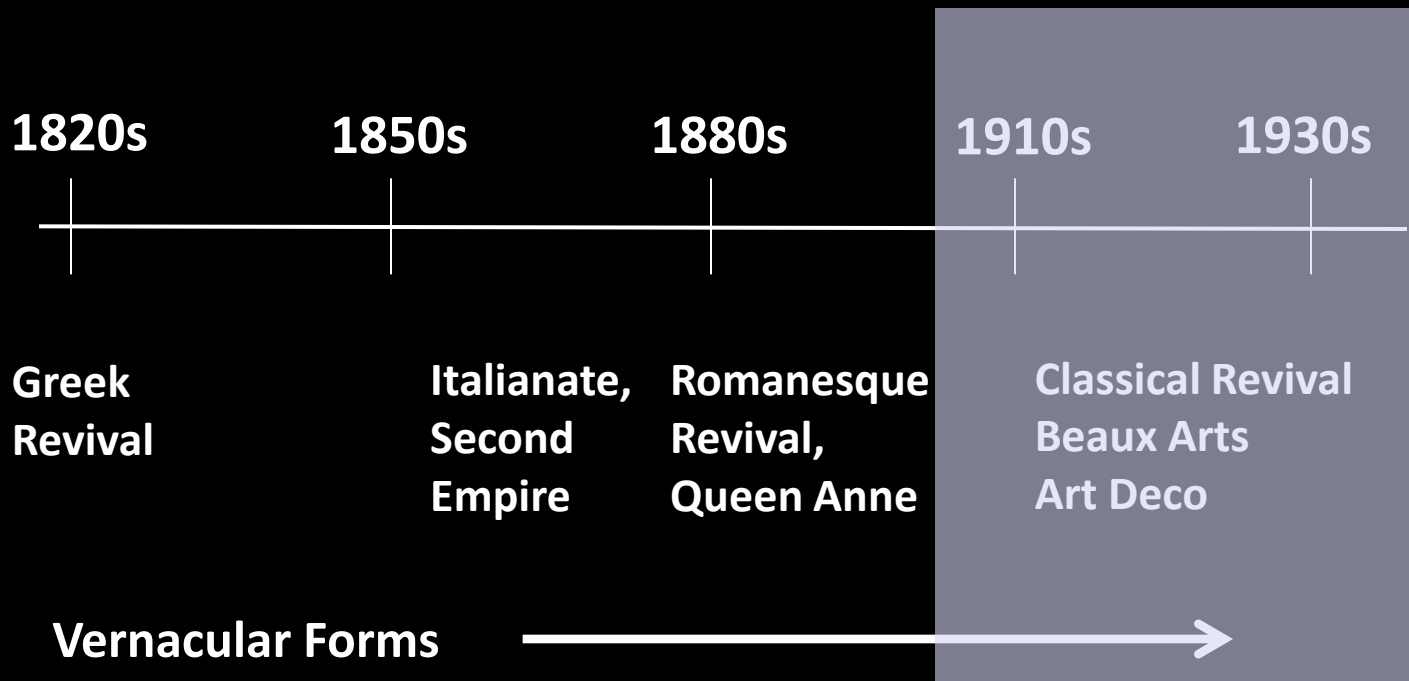
Kresge Building, 127-131 South 5th Street (1925)



Beaux Arts
Stuart Broadwell Building
(1925)

Central Springfield Historic District

- 1986 Boundary Extensions – 4 buildings added



Leland Hotel (1911)





Leland Hotel Annex (c. 1915)



State Journal Register Building
(1929)

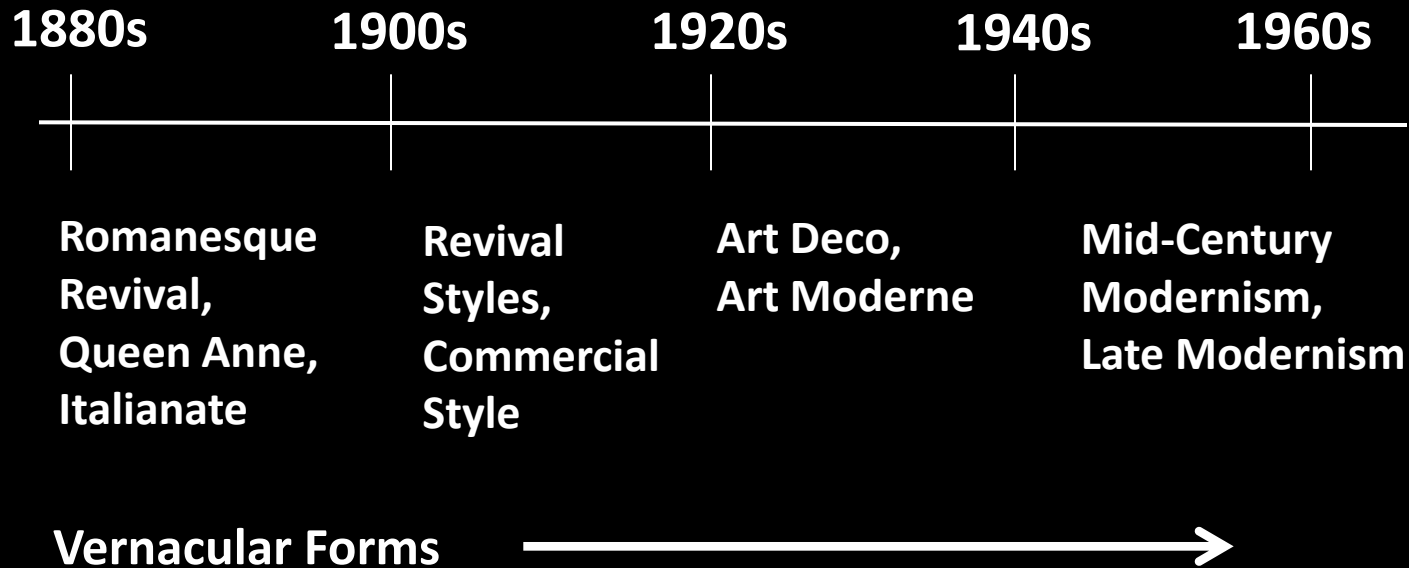


Commercial Style –
Ferguson Building, 1906



Central Springfield Historic District

- 2015 Boundary Expansion with 75 new contributing buildings + 8 non-contributing buildings



International Style

Security Federal Bank Building, 506-510 East Monroe Street (1959)



St. George Building, 300 East Monroe Street (1965)





621 East Monroe Street (c. 1961)

American Savings + Loan Bank, 411 East Monroe Street (1963)





First United Methodist Church Education Wing, 501 East Capitol Avenue (1967)

Second Presbyterian Church Education Wing, 321 South 7th Street (1968)





600 East Block of Washington Street (c. 1870s)

Queen Anne Commercial
Grand Hotel, 109 7th Street
(c. 1890s)



600 East Block of East Adams Street (1910s)



500 East Block of East Capitol Avenue (1910s)





300 East Block of East Capitol Avenue (1910s)

300 Block of East Monroe Street (1890- 1910s)



Springfield Fire Department Engine Co. 82 (1926)





Schnepf Block, 300 East Block of Adam Street (1912)



St. Nicholas Hotel and Annex, 400
East Jefferson Street (1910 + 1922)





Vernacular buildings

312 South 4th Street

318 South 4th Street



National Register Nomination Process

- Nomination forwarded to the Illinois State Historic Advisory Council (ISHAC) for review + certified recommendation
- Review by National Park Service for decision + listing



Historic Preservation Benefits

- Maintains sense of place
- Builds identity + Springfield “brand”
- Encourages better design
- Stimulates revitalization
- Creates jobs + tourism
- Protects investment
- Builds community pride + understanding





Central Springfield National Register Historic District